



ikemachinery.com



*Food Machinery Manufacturer Since 1994*



02

## ECO-Series Heat Pump Food Dehydration System

for drying food in a more economical way.

www.ikemachinery.com

## 02.1 WRH series Embedding Dehydrator

The ECO series heat pump food dehydration system uses the WRH series embedding dehydrator as the host.

### WRH-300G dehydrator

WRH-600G is the main dryer of the ECO-600G drying system. It can dry 400-600kg of fresh materials each time. The drying temperature can be adjusted between 50-80 degrees Celsius.



Exhaust hot air outlet



Circulating air inlet



Hot and dry air outlet

Model	WRH-300G
Material	Stainless Steel
Capacity	400~600Kg / batch
Power Supply	380V~3N / 50Hz/60Hz
Power Input	5.0KW
Running Current	10.5A
Fast heating-up	4.5KW
Maximum Power	11.0KW
Dehydration Amount	16.0L/h (@50°C,80%)
Working Temperature	50~80°C
Controller	IKE Smart color-touch-screen
Noise Level	≤75dB(A)
Machine Size( L*W*H)	1800*680*1320mm

# The most economical drying system

We have installed the whole drying system for you.

IKE ECO series heat pump food dehydration system is an economical all-in-one drying solution IKE specially designed and manufactured for today's customers. It is made of stainless steel. It can be equipped with plastic trays and stainless steel trays.

## What can it dry?

- ☑ Fruits and Vegetables
- ☑ Pastas
- ☑ Tea
- ☑ Leaves
- ☑ Meat and Petfood
- ☑ Seafood

It can be used to dry fresh food separately or even together without the worry of mixed fragrance.



## Features:

1. Use heat pump technology to save electricity.
2. A convenient all-in-one drying system with a simple room structure. Small drying room but can provide a large spread drying area.
3. Different tray options with different costs to meet various drying needs.
4. The drying system is delivered in a complete set. No installation is needed, which frees users from the installation and assembling troubles.
5. Closed-loop air circulation inside a well insulated drying chamber, only condensed water is discharged during the drying. Little energy loss, clean and hygienic.



## 02.1 WRH series Embedding Dehydrator

The ECO series heat pump food dehydration system uses the WRH series embedding dehydrator as the host.

### WRH-600G dehydrator

WRH-600G is the main dryer of the ECO-600G drying system. It can dry 400-600kg of fresh materials each time. The drying temperature can be adjusted between 50-80 degrees Celsius.



Exhaust hot air outlet



Circulating air inlet



Hot and dry air outlet

Model	WRH-600G
Material	Stainless Steel
Capacity	400~600Kg / batch
Power Supply	380V~3N / 50Hz/60Hz
Power Input	5.0KW
Running Current	10.5A
Fast heating-up	4.5KW
Maximum Power	11.0KW
Dehydration Amount	16.0L/h (@50°C,80%)
Working Temperature	50~80°C
Controller	IKE Smart color-touch-screen
Noise Level	≤75dB(A)
Machine Size( L*W*H)	1800*680*1320mm



## WRH-1500G dehydrator

WRH-1500G is the main dryer of the ECO-1500G drying system. It can dry 800kg-1500kg of fresh materials each time. The drying temperature can be adjusted between 50-80 degrees Celsius.



Controller



380V Power supply and system control panel wire connection hole



Hot and dry air outlet

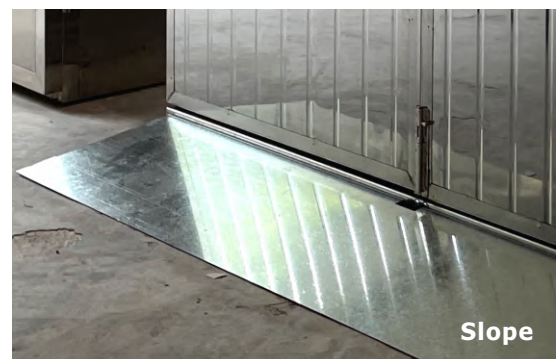
Model	WRH-1500G
Material	Stainless Steel
Capacity	800~1500Kg / batch
Power Supply	380V~3N / 50Hz/60Hz
Power Input	13.0KW
Running Current	20.0A
Fast heating-up	9.0KW
Maximum Power	23.0KW
Dehydration Amount	40.0L/h (@50°C,80%)
Working Temperature	50~80°C
Controller	IKE Smart color-touch-screen
Noise Level	≤75dB(A)
Machine Size( L*W*H)	1800*800*1620mm



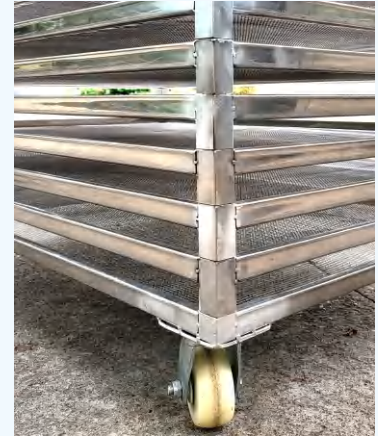
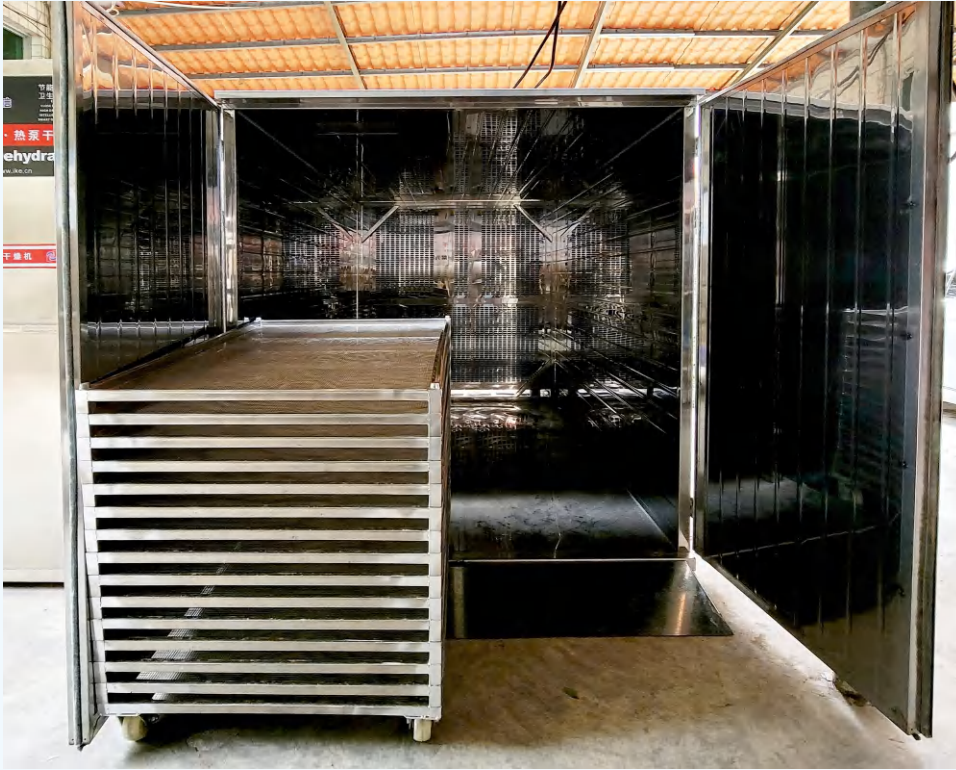
## 04.2 ECO series Heat Pump Dehydration System



The ECO series dehydration system consists of the main machine WRH series dehydrator and the insulated drying room as a whole unit, with the highest capacity and efficiency. It can be loaded into containers and delivered as a complete set. When you receive this dehydration system, just connect to the power supply to use it.



## ECO series Dehydration System with Mesh Trays



Model	ECO-600GM	ECO-1500GM
Material	Stainless Steel	Stainless Steel
Capacity	400~600Kg / batch	800~1500Kg / batch
Power Supply	380V~3N / 50Hz/60Hz	380V~3N / 50Hz/60Hz
Power Input	5.0KW	13.0KW
Running Current	10.5A	20.0A
Fast heating-up	4.5KW	9.0KW
Maximum Power	11.0KW	23.0KW
Dehydration Amount	16.0L/h (@50°C,80%)	40.0L/h (@50°C,80%)
Working Temperature	50~80°C	50~80°C
Controller	IKE Smart color-touch-screen	IKE Smart color-touch-screen
Noise Level	≤75dB(A)	≤75dB(A)
Chamber Size( L*W*H)	4100*2000*2100mm	6200*2000*2050mm
S.S.Trolley Size(L*W*H)	1200*880*160mm	1200*880*160mm
Trolley Number	4set	6set
Mesh Tray Size(L*W*H)	1200*880*30mm	1200*880*30mm
Mesh Tray Number	116pcs	174pcs



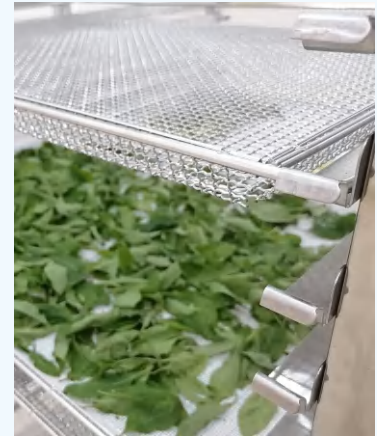
## ECO series Dehydration System with Plastic Trays



Model	ECO-600GP	ECO-1500GP
Material	Stainless Steel	Stainless Steel
Capacity	400~600Kg / batch	800~1500Kg / batch
Power Supply	380V~3N / 50Hz/60Hz	380V~3N / 50Hz/60Hz
Power Input	5.0KW	13.0KW
Running Current	10.5A	20.0A
Fast heating-up	4.5KW	9.0KW
Maximum Power	11.0KW	23.0KW
Dehydration Amount	16.0L/h (@50°C,80%)	40.0L/h (@50°C,80%)
Working Temperature	50~80°C	50~80°C
Controller	IKE Smart color-touch-screen	IKE Smart color-touch-screen
Noise Level	≤75dB(A)	≤75dB(A)
Chamber Size( L*W*H)	4100*2000*2100mm	6200*2000*2050mm
S.S. Trolley Size(L*W*H)	810*610*120mm	810*610*120mm
Trolley Number	8set	16set
Plastic Tray Size(L*W*H)	800*600*60mm	800*600*60mm
Plastic Tray Number	232pcs	464pcs



## ECO series Dehydration System with Stainless Steel Trays

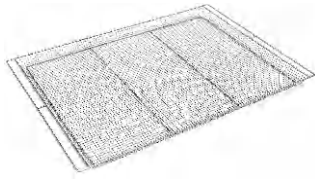


Model	ECO-600GS	ECO-1500GS
Material	Stainless Steel	Stainless Steel
Capacity	400~600Kg / batch	800~1500Kg / batch
Power Supply	380V~3N / 50Hz/60Hz	380V~3N / 50Hz/60Hz
Power Input	5.0KW	13.0KW
Running Current	10.5A	20.0A
Fast heating-up	4.5KW	9.0KW
Maximum Power	11.0KW	23.0KW
Dehydration Amount	16.0L/h (@50°C,80%)	40.0L/h (@50°C,80%)
Working Temperature	50~80°C	50~80°C
Controller	IKE Smart color-touch-screen	IKE Smart color-touch-screen
Noise Level	≤75dB(A)	≤75dB(A)
Chamber Size( L*W*H)	4100*2000*2100mm	6200*2000*2050mm
S.S.Trolley Size(L*W*H)	1100*845*1870mm	1100*845*1870mm
Trolley Number	4set	6set
S.S.Tray Size(L*W*H)	780*540*30mm	780*540*30mm
S.S.Tray Number	280pcs	420pcs

## Accessories for ECO series food dehydration system

### Stainless Steel Tray

Size: 780\*540\*30mm  
Aperture: 6\*6mm  
Materials: S.S. 304  
Weight: 2.1kg



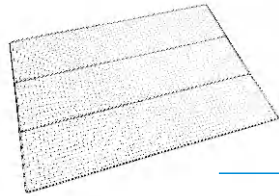
### Stainless Steel Trolley for S.S. trays

Size: 1100\*845\*1870mm  
Materials: S.S.201



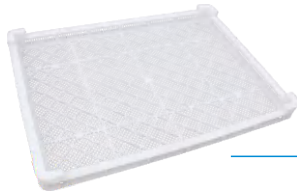
### Flat Net Tray

Size: 780\*540mm  
Aperture: 10\*10mm  
Materials: S.S. 304



### Plastic Tray

Size: 800\*600\*60mm  
Materials: plastic



### Stainless Steel Trolley for Plastic trays

Size: 810\*610\*120mm  
Materials: S.S.201



### Mesh Tray

Size: 1200\*880\*30mm  
Aperture: 6\*6mm  
Materials: S.S. 304

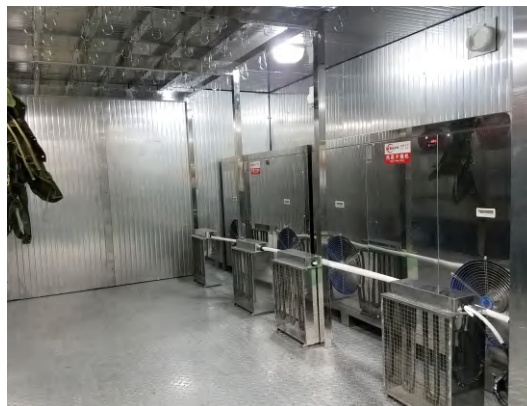


### Stainless Steel Trolley for Mesh trays

Size: 1200\*880\*160mm  
Materials: S.S.304



## Drying is easier than you think





# Drying Effect



dried mango



dried grape



dried pawpaw



dried broccoli



dried garlic



dried carrot



dried cardamon



dried chilli



dried long bean



dried jerky



dried meatloaf



dried chicken